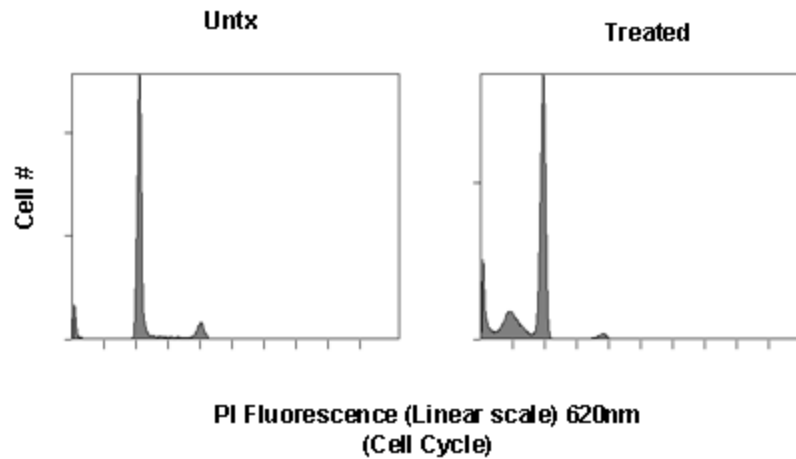


## Sub G1 DNA: Propidium Iodide



**Sub-G1 DNA content assay with propidium iodide:** Fixed cells (70% ethanol) stained with PI solution plus 0.1% Triton X and RNase A. In sample induced to undergo apoptosis, note the Gaussian fluorescence distribution of the "sub-G1" population displayed on a linear scale.