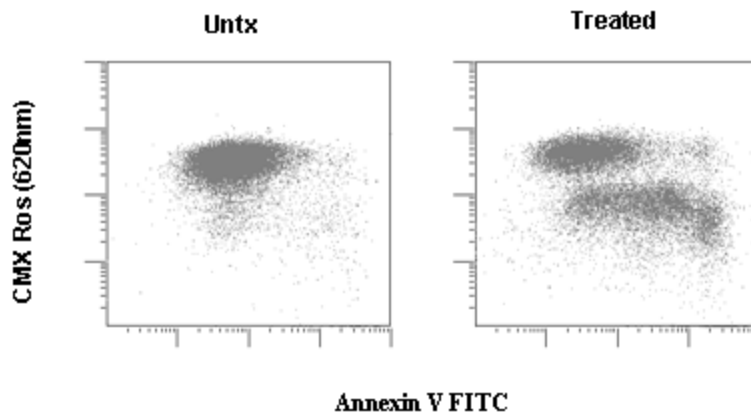


Multiparameter Apoptosis Assessment



Multiparameter apoptosis assessment-mitochondrial membrane potential plus Annexin V. K562 cells (treated with STI571 or not) incubated with CMX Rosamine, washed and resuspended in 1x binding buffer plus Annexin V FITC. Cells undergoing apoptosis show first a loss in mitochondrial membrane potential (loss of CMX Rosamine fluorescence) followed by a transition to Annexin V positivity.