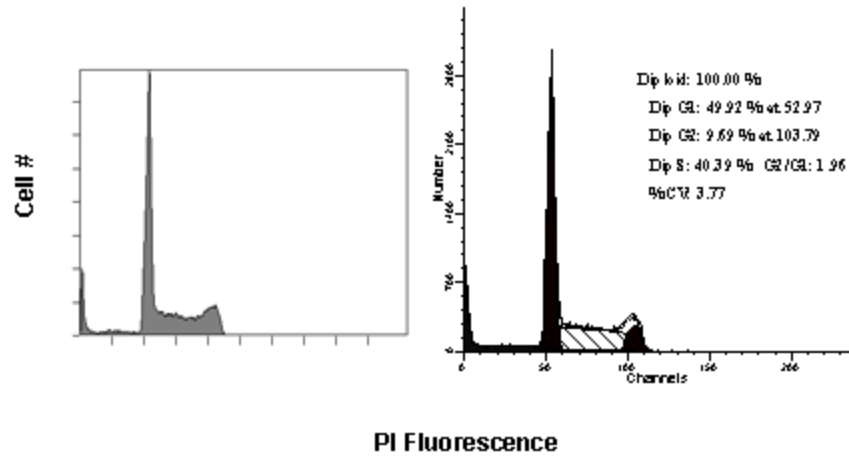


Cell Cycle Analysis: Propidium Iodide



Cell Cycle Analysis with propidium iodide (PI) staining (cell line): Cells fixed in 70% ethanol. Staining is with a 50ug/ml solution of PI containing a 0.1% Triton X and RNase A. Flow cytometry histogram (Left) further analyzed using Modfit LT (Verity Software House, Topsham, ME) to obtain fitting for cell cycle fraction data (Right).